

IONIQ 6





IONIQ

You're in charge.

Dedicated entirely to electric vehicles and next level e-mobility, the new IONIQ line-up has been created for conscious consumers who want to be in charge of a brighter and more sustainable future. The re-launch of the IONIQ brand in 2020 opened a new chapter for us as a leader in the era of electrified mobility – the next step in our ongoing transformation as a smart mobility solution provider with zero-emissions solutions.

IONIQ enables modern customers to live the lifestyle of their choice with products that reflect who they are, while making a positive impact on the planet. More than just taking us from A to B, IONIQ connects individuals with solutions that benefit the many – empowering all of us to say: 'I'm in charge'.

Sophisticated streamliner.

Sleek and unmistakably unique, the all-new IONIQ 6 is the silhouette of the new era and is helping lead the charge to electric mobility. Its streamliner design and mindful cocoon-like interior have been created to provide you with a personalised and flexible space that is redefining the in-car experience. Aided by an ultra-low drag coefficient of just 0.21 and its cutting-edge electric drive system, it can deliver a driving range up to 338 miles*.



*Range according to WLTP combined cycle. Driving range may vary slightly depending on road conditions, your driving style and the temperature. It is also dependent on the type of tyres equipped. WLTP maximum electric range for IONIQ 6 Premium 77.4 kWh (RWD) - Actual range may vary.

Gracefully aerodynamic.

Designed to thrill, the gracefully sloping streamliner design also delivers stellar aerodynamic performance, which translates into lower energy consumption and phenomenal driving range. Reimagined for today's sustainable mobility, the sweeping curves and smooth lines pay homage to the iconic streamlined vehicles of the 1920's and 30's. The flowing headlamps harmonise with the front bumper's sleek air intakes and active air flaps for an elegantly efficient look at the front.



Featuring Matrix beam LED technology and Parametric Pixel Daytime Running Lights, the Intelligent Front-lighting System automatically adapts to road situations, maximizing high beam usage without the risk of dazzling oncoming drivers.





Elegant efficiency.

The sculpted shape with its simple, yet graceful curves has its roots in the Prophecy Concept EV. Designed for aerodynamic efficiency to maximise the electric driving range, the ducktail shape reinforces the downforce, and the slight boat-tail structure reduces drag. The rear spoiler is shaped with glass-like, transparent materials that highlight its one-of-kind LED signature lighting.



Aerodynamic design.

In the EV era, efficient aerodynamics are vital to lower energy consumption and increase range. And with IONIQ 6, our engineers and designers have achieved a new benchmark: an impressively low 0.21 drag coefficient – one of the lowest of any production car in the world. To achieve this, a wide range of advanced aerodynamic solutions have been implemented including: flush door handles, the rear spoiler, front active air flaps, wheel air curtains, wheel gap reducers, separation traps and wheel deflectors.



Active air flaps.

The active air flaps integrated in the front bumper guide airflow into the air-intake, working with the wheel air curtain and wheel gap reducer to improve aerodynamics. They automatically open and close according to driving conditions for maximum aerodynamic efficiency and battery cooling.



Separation trap.

A separation trap between IONIQ 6's rear combination lamp and the lower part of the rear bumper achieved a breakthrough in aerodynamic performance while maintaining the pure volume of the vehicle body. The signature IONIQ Parametric Pixels can be found on the wrap-around rear combination lights and on the rear wing's High-Mounted Stop Lamp.



Wheel gap reducer.

The wheel gap reducer at the front of the wheel well helps further reduce air resistance. It reduces the gap between the wheel and wheel-arch to prevent the airflow from detaching from the wheels, maximising the effect of the aero-wheels.



Supercomputer aero efficiency.

The morphing technique our designers and engineers used to find the ideal shape of the spoiler and other advanced aerodynamic solutions, utilised a supercomputer and computational fluid dynamics analysis. This allowed them to select the optimal spoiler shape from about 70 different options.



Inside out. Interior-first design means more space.

Human-centric from the start, IONIQ 6's interior space was developed simultaneously with the exterior form. This integrated approach has yielded an exceptional result: a dome-shaped cabin that lets passengers freely enjoy in-car life. Interior space has been maximised thanks to our new EV platform, stretching it at the front and rear – resulting in the unique streamliner silhouette and spacious interior. Enjoy premium comfort in the Ultimate trim with two fully reclining relaxation seats in the front for a refreshing break while charging – at the push of a single button.





To enhance the overall feeling of spaciousness inside the cocoon-like cabin, we moved the buttons from the front doors to the centre console, creating a slimmer door. This not only looks fantastic – it also gives you more space for your knees, increasing your comfort while driving. The centrepiece of the sleek modular dashboard is the extra wide integrated display, which combines a 12.3" touch infotainment screen and a 12.3" digital cluster for a high-tech look that comes standard. Dual Colour Ambient Lighting harmonises with transparent materials for a relaxed and comfortable ride that you can change to suit your mood. The bridge-type centre console provides plenty of convenient storage and a flat surface perfect for setting up a laptop.

The optional innovative digital side mirrors give you a clear view of what's happening on both sides of the vehicle – even in bad weather conditions. They give you a wider-angle view compared to traditional mirrors, so you can see more. The side views are projected via two OLED monitors seamlessly integrated into the dashboard.

Customise the look and feel of your cabin.

Create the perfect atmosphere to suit your mood. Select one of the 6 dual colour themes developed by colour experts to help drivers and passengers feel more relaxed and comfortable. Or choose from 64 colours to compose your own mood light settings. What's more, the Speed Sync Lighting mode adds emotion to the driving experience by changing the brightness of the interior lighting based on the vehicle's speed.



Wonderful Day.

Lift your spirits up with bold and vivid colours.



Mind Care.

Soft mellow colours to relieve stress and anxiety.



Concentration.

Radiant colours to heighten awareness and improve focus.



Healing Forest.

Find calm and harmony in the colours of nature.



Meditation.

Set the atmosphere with deep colours for deep thoughts.



Creative Moment.

Get inspiration from sensuous colours.





Making life as connected as you want to be.

The IONIQ 6 is equipped with a stellar range of intuitive smart tech to make life inside as connected as you want to be. Enjoy the seamless integration of advanced, intuitive technologies for an enhanced digital experience. Cutting-edge connectivity features like our BlueLink® Connected Car Services, let you control your car from your smartphone – or with your voice. On top of the many clever features that you can control with the BlueLink app, a free three-year subscription to Hyundai's LIVE Services is also included with the navigation system with real-time information on traffic, parking and charging stations, including availability and estimated charging time. A simple tap on the station icon lets you see what kind of charging is available. And with the electric vehicle route planner, when you enter a destination, the navigation automatically suggests charging points on the route – so you'll always know where your next charge is. And with Apple CarPlay™ and Android Auto™ on board as well, you can plug in your smartphone and mirror your apps and music up onto the big 12.3" infotainment touchscreen.

Apple CarPlay™ is a registered trademark of Apple Inc. Android Auto™ is a registered trademark of Google Inc.



The wireless charger port features Parametric Pixels that signal the charge level of your smartphone at a glance.



Apple CarPlay™ and Android Auto™ smartphone mirroring.

Innovative use of environmentally friendly materials.

Sustainable materials are used extensively in IONIQ 6, including recycled pigment paint from end-of-life tyres in the exterior cladding. The interior is available with features such as eco-processed leather, recycled PET fabric, bio PET fabric, bio paint derived from vegetable oils, and recycled fishing net carpet. The innovative use of natural materials is another contribution to sustainability in our manufacturing processes, making IONIQ 6 less reliant on oil-based products.



Plant-based components for seats and carpets.

The seat, headlining and carpets include recycled PET fabric as well as bio components extracted from sugar cane and corn. And the leather used in the seats is eco-process dyed using flaxseed oil.



Bio paint and bamboo charcoal pigments.

Bio paint derived from vegetable oils is used on the interior doors, recycled pigment paint from end-of-life tyres in the cladding, and bamboo charcoal pigment paint on the body.



Turning ocean waste into floor carpet.

We support an NGO (non-government organisation) in their work recovering abandoned fishing nets from the oceans and coral reefs, which are then recycled into the regenerated nylon yarn used in the IONIQ 6 floor carpet.

Technology highlights.

The mindful cocoon-like interior is loaded with smart technology created to provide you with a personalised and flexible space that redefines your in-car experience.



Advanced head-up display.*

This clever feature essentially turns the windshield into a display screen, guiding you safely through the world. It projects virtual information like turn-by-turn navigation or lane safety warnings directly onto your view of the road. This allows you to process information quickly while keeping your eyes – and attention on the road.

*Only available on Ultimate and First Edition specifications.



e-Active Sound Design and Bose premium audio system.*

The new sound of electric driving. Enjoy a more emotionally charged driving experience with e-Active Sound Design. This Hyundai first feature produces a virtual driving sound through dedicated controllers and the Bose premium audio system for a dynamic driving experience. The optimum sound is tailored to the cabin, considering variables such as speed, torque and how hard you are accelerating. The premium Bose sound system lets you immerse yourself into a world of exquisite sound with eight high-performance speakers, including a subwoofer, optimally tuned to deliver a sensational listening experience.



Vehicle-to-Load technology (V2L).

With IONIQ 6, you can power any device and charge items such as electric bicycles, scooters or computers – on the move or at your favourite outdoor locations. There's an on-board 230V plug located by the rear seats. Using a converter that plugs into the bidirectional exterior charging port, you can power devices up to 3.68 kW even when the vehicle is turned off.



Next level electric performance.

Elegantly combining amazing performance with an astonishing array of smart tech – and delivering a driving range of up to 338 miles* WLTP – this all-electric four-door saloon is a game changer. With its 77.4 kWh battery, the IONIQ 6 delivers quick acceleration: going from 0 to 62 mph in just 5.1 seconds in the all-wheel drive version** and 7.4 seconds in the rear-wheel drive version*. Both deliver a top speed of 115 mph.

*Range according to WLTP combined cycle. Driving range may vary slightly depending on road conditions, your driving style and the temperature. It is also dependent on the type of tyres equipped. WLTP maximum electric range for IONIQ 6 Premium 77.4 kWh (RWD) - Actual range may vary. **77.4 kWh Battery AWD variants.



Always in control.

Available with the interactive LED steering wheel that features four Parametric Pixel LEDs that welcome you into the vehicle, displays the drive mode and signals the status of various vehicle systems. The steering wheel responds to button and voice commands, putting you comfortably in control and instantly aware of the status of your IONIQ 6.



Interactive LED steering wheel.*

Four colour combinations signal six functions, showing you: welcome and good bye, EV ready on, voice recognition, EV charging status, reverse gear selected, and drive mode selected: Sport/Eco/Normal.*

*Only available on Ultimate and First Edition specifications.

Customise your performance.

Create a personalised driving experience – IONIQ 6 gives you a wide range of performance parameters that you can adjust to suit your mood and the situation. You can customise: steering sensitivity, motor power output, and accelerator pedal sensitivity. And in the AWD version you can adjust drive mode from RWD to AWD to auto AWD.



Steering wheel sensitivity.

Steering mode sets the force required to turn the wheels. Select Sport for a sharper, tighter steering feeling with less force and quicker steering response than in Normal.*



Accelerator pedal sensitivity.

With their high levels of instantly available torque, electric vehicles really jump when you press the accelerator. IONIQ 6 gives you the option of setting the pedal sensitivity lower for a smoother and gentler ride. Choose from High, Normal, and Low.*



Leading the charge into the electric era with E-GMP.

IONIQ 6 is built on our ground-breaking Electric-Global Modular Platform (E-GMP). Created with proprietary technologies developed by Hyundai, this dedicated battery electric vehicle platform enables faster charging, increased driving range, more interior space and better handling. The battery pack's position within the wheelbase ensures ideal weight distribution between the front and rear and a low centre of gravity for improved handling performance. Installing the battery under the floor pan also eliminates the centre tunnel, which results in a perfectly flat floor. That in turn increases leg room and enhances the feeling of openness and roominess throughout.

Collision energy absorption zone

High voltage battery protection zone

Load support zone



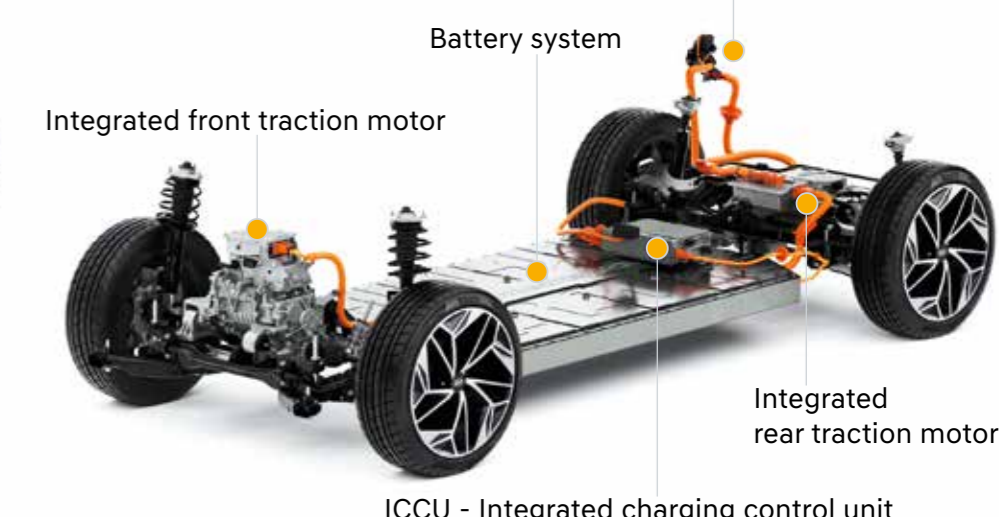
Bi-directional charging plug

Battery system

Integrated front traction motor

Integrated rear traction motor

ICCU - Integrated charging control unit



The multi-frame structure and new safety technologies work in unison to protect the passengers and the battery. A collision energy absorption zone disperses crash forces along energy load paths in the crush zone whose structures are designed to deform in a predictable manner, thus mitigating impact energy while protecting cabin occupants and the 800V battery. The load support zone in the front of the dashboard includes an evasion structure to minimise impact energy on the Power Electrical System and battery. The high voltage battery that is incorporated into the vehicle floor is shielded by an ultra-high strength steel support structure to improve collision safety.

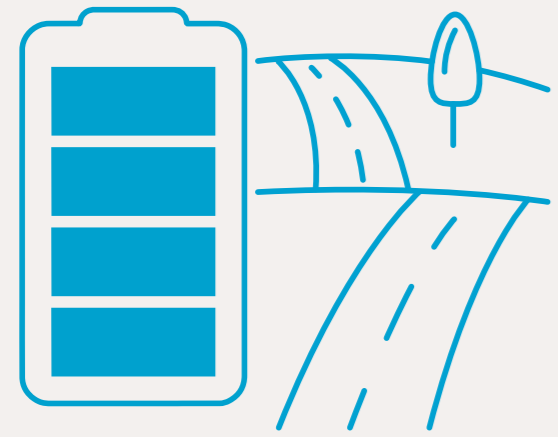
Hyundai's new Power Electrical System (PE) serves as the industry's new benchmark for efficiency. Composed of the drive motor and decelerator, inverter and battery, the PE system is the EV's core – replacing the conventional internal combustion engine so to speak. Highlights of this next-generation system include the advanced integration of the motor, decelerator and inverter into a single unit as well as a Standardised battery module. This integration extends the driving range and raises system efficiency to industry-leading standards. The innovative Integrated Charging Control Unit (ICCU) utilises high voltage Silicon Carbide to support 800V charging. It also makes V2L charging possible.

Powertrain, Range and Performance.

Pick your power and preferred range. The IONIQ 6 is available with the long range 77.4 kWh battery only. You can choose from two variants: all-wheel drive (AWD) with dual electric motors or a rear-wheel drive (RWD) with a single electric motor. The 77.4 kWh battery delivers 325 PS (239 kW) in the AWD variant** and 228 PS (168 kW) in the RWD variant*.

*Range according to WLTP combined cycle. Driving range may vary slightly depending on road conditions, your driving style and the temperature. It is also is dependent on the type of tyres equipped. WLTP maximum electric range for IONIQ 6 Premium 77.4 kWh (RWD) - Actual range may vary.

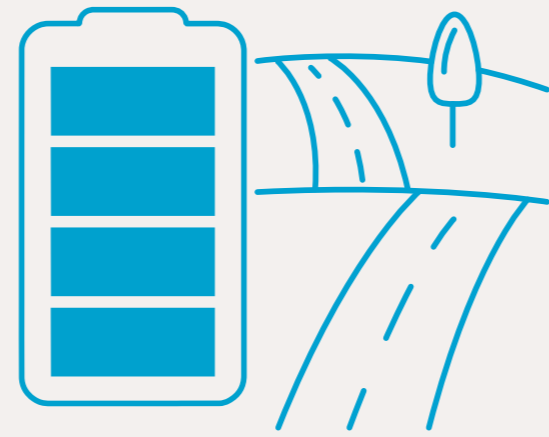
77.4 kWh (RWD)



338 miles*

*(RWD) = 338 miles with 20" wheels. Considering optimum conditions.

77.4 kWh (AWD)



322 miles*

*AWD = 322 miles WLTP with 20" wheels. Considering optimum conditions.

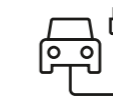
Regenerative braking and i-Pedal.

Equipped with cutting-edge technology for intelligent driving, IONIQ 6's regenerative braking system charges the battery while driving by using the electric motor to slow the vehicle. You can control the level of energy that the system regenerates and stores in the battery by adjusting the level of regenerative braking with the steering wheel-mounted paddle shifters. The higher the level, the more the car slows and charges the battery when you take your foot off the accelerator. Holding the left paddle shifter activates maximum strength of regenerative braking and you can slow the car to a complete stop in this way without having to press the conventional brake pedal. Additionally, the Smart Regenerative Braking System utilizes the front radar sensors to automatically control the level of regenerative braking to react to the traffic ahead, slowing you down accordingly. There is also i-Pedal mode, which allows acceleration/deceleration/stopping using only the accelerator pedal. Simply tap on left paddle shifter to enter fourth stage to enable the one pedal function and the regenerative braking stage symbol changes to the one pedal symbol.



Fast charging.

No time to wait? Don't worry IONIQ 6's 800V battery supports charging at up to 220 kW at a DC ultra-fast charging station – charging from 10 to 80% in as little as 18 - 36 minutes*. Hyundai's world's-first patented technology supports both 400V and 800V charging infrastructure without the need for additional components or adapters. Which means you can get in and out of rapid charging stations faster, because you have the flexibility of using a different charger if one type is occupied.



77 kWh Long Range Battery (Ultra-fast charging)
350 kW DC station: Charging from 10 to 80%
in 18 minutes - 36 minutes*



77 kWh Long Range Battery (Fast charging)
50 kW DC station: Charging from 10 to 80%
in 73 minutes*

*Hyundai test data for comparison purposes. Actual time will vary and is dependent on a number of factors including battery temperature, condition and age, ambient temperature and the power provided by the charger. Charge time increases in cold weather and if battery temperature activates safeguarding technology. Ultra-fast chargers are currently available on selected motorways/major arterial routes – see the Charge myHyundai app or Charge myHyundai map for details.

Home charging / AC charging.

Depending on your grid connection at home or the type of charging station you have access to, IONIQ 6 gives you a range of flexible charging possibilities aside from ultra-fast DC charging. You can charge at home overnight to take advantage of off-peak rates or top up – the powerful 11 kW on-board charger gives you a range of flexible possibilities.

The AC 7 kW charging time for the 77.4 kWh Battery is 11 hours 45 minutes. (EU 3-phase 230V)



*Range according to WLTP combined cycle. Driving range may vary slightly depending on road conditions, your driving style and the temperature. It is also dependent on the type of tyres equipped.
WLTP maximum electric range for IONIQ 6 Premium 77.4 kWh (RWD) - Actual range may vary.

Vehicle-to-Load technology.

Simply plug in your laptop or electric bike to charge them, just like at home. IONIQ 6's innovative interior Vehicle-to-Load technology (V2L) lets you make the most of sustainable electric mobility.

There's an on-board 230V electrical socket located by the rear seat which allows you to freely use or charge any electric device – on the move or at your favourite location. And if you're out at the beach or having a picnic, you can charge your electric scooters or run your camping equipment by purchasing a converter that plugs into the bidirectional exterior charging port. The outside port provides up to 3.6 kW power even when the vehicle is turned off.



Bluelink® Connected Car Services.



The IONIQ 6 is equipped with the latest upgrade of Bluelink® Connected Car Services – delivering seamless connectivity with online voice recognition and a wide range of features to make your drive more convenient and enjoyable. Additional voice recognition features let you control features like climate and temperature, windows and your infotainment system through natural voice commands. On top of the many clever features that you can control with the Bluelink app, a free three-year subscription to Hyundai's LIVE Services is also included with the navigation system. Visit our website to discover the whole suite of Bluelink® services designed to make driving safer, easier, and more fun.



Connected Routing.

Enjoy more accurate traffic information, more precise times of arrival, and more reliable route recalculations so you get there faster. Cloud based navigation uses real-time and historical data for better routing and forecasting.

Explore more: www.hyundai.co.uk/bluelink-connectivity



Electric vehicle route planner and charging station finder.

Enjoy the peace of mind of always knowing where your next charge is. Enter a destination and the navigation automatically suggests charging points on the route¹. IONIQ 6 shows you real-time charging station information such as location, connector types and availability.

¹ EV route planning service provides for a recommendation based on our best effort but may not reflect real life driving results. Any warranty beyond what is required by the law is therefore excluded.



Remote commands.

Forget to lock your car? Don't worry, your IONIQ 6 will let you know by sending a push notification to your smartphone. Then, after entering your PIN, you can lock or unlock the doors using a button in the Bluelink app. Too cold outside? No problem. You can use the app to pre-heat your car, defrost the windows and activate the steering wheel heating no matter where you are. But when connected to an external power source – like at home in your garage – you can also schedule a time to pre-heat to save battery power that would be needed later to heat the car on the road. And when it comes to charging, a few taps is all it takes to save money. Use the app to program start and stop charging times to make the most of off-peak electricity rates. And to make sure that your car is fully charged when you are ready to go, of course.



Live Parking Information.

Find a parking spot faster for more efficient and stress-free parking. Take advantage of real-time information to find and compare parking options in garages, parking lots and on the street.

Always up-to-date with OTA software updates.

On top of wireless map & infotainment software updates, IONIQ 6 is the first Hyundai that offers Over The Air (OTA) vehicle software updates. The latest enhancements now are available at the push of a button – you no longer have to visit the retailer. The advantage: your IONIQ 6 is always up-to-date, like a new car with new functional extensions, quality improvements and new functions.



Performance and feature improvements.

Benefit from continuous performance updates and new features through Over The Air vehicle software updates. You get the latest enhancements as soon as they are available.

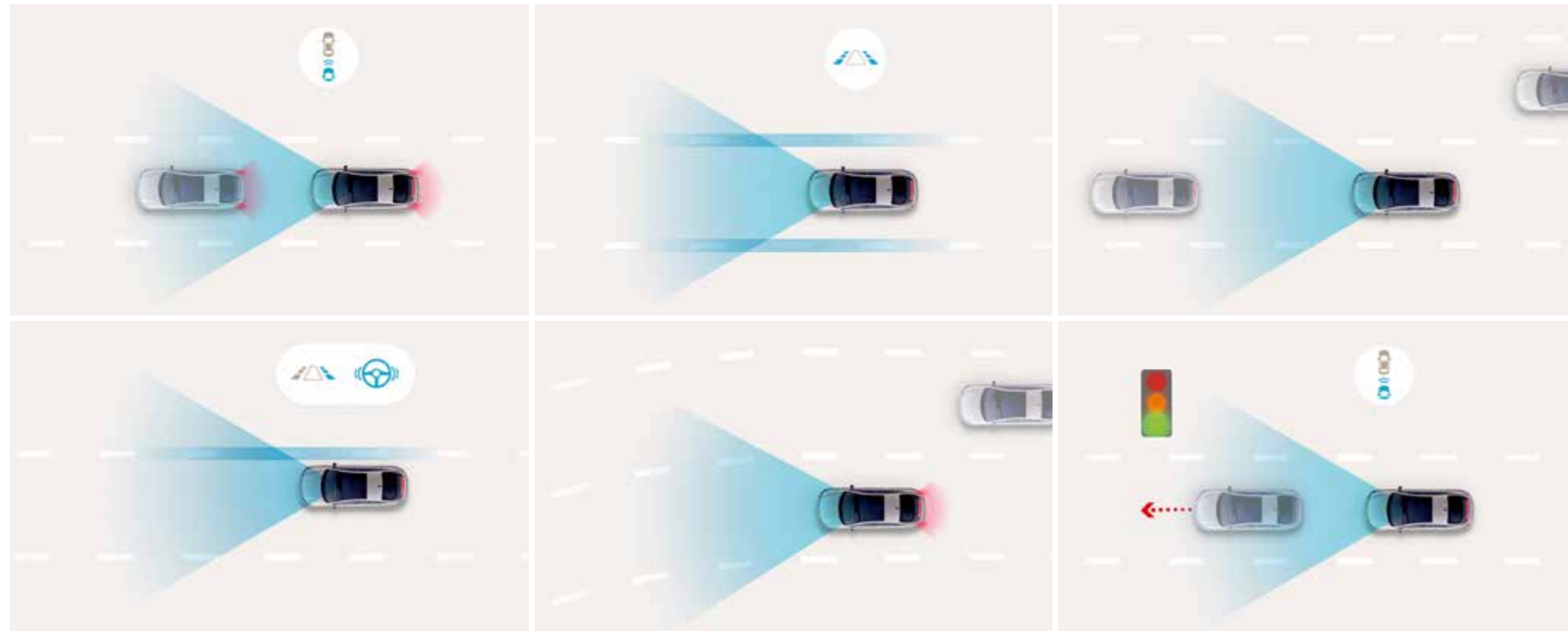
The latest maps and infotainment.

You'll receive future BlueLink map & infotainment software updates automatically over the air, rather than needing to download and install them manually or having to visit a retailer to get them.



Hyundai Smart Sense.

Enjoy a maximum of safety and convenience with the highest level of safety and driver assistance features in the Hyundai line-up. With Hyundai Smart Sense, our cutting-edge Advanced Driver Assistance Systems, the IONIQ 6 has been equipped with the very latest safety and driving assist features for added peace of mind. It features Level 2 autonomous driving technology with Highway Driving Assist II, which controls speed and distance and assists you when changing lanes and with collision avoidance assist from a near cut-in vehicle. IONIQ 6 has earned the highest possible 5-Star Euro NCAP safety rating.



Forward Collision-Avoidance Assist (FCA).
Stops your car fast, even if you're distracted. FCA alerts you to slowing or stopped vehicles as well as cyclists and pedestrians in your path – and automatically applies full braking power if you don't react in time. Includes the functions: Junction turning, Junction crossing Lane changing oncoming, Lane change side lane, and Evasive steering assistance.

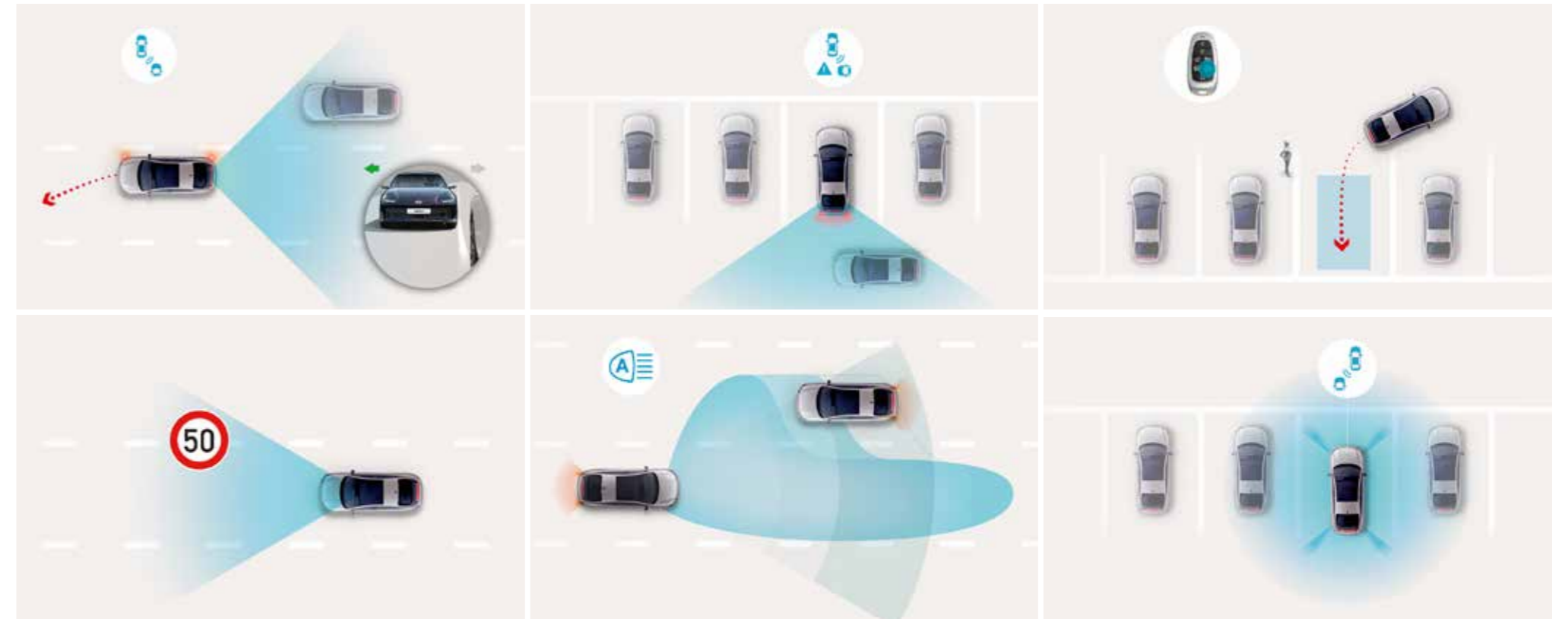
Lane Keeping Assist (LKA).
Helps keep you on the straight and narrow. LKA sends visual and audible alerts if you start drifting out of your lane without signalling and initiates subtle corrective steering assistance to steer you back.

Lane Following Assist (LFA).
Keeps you centred and safer. When activated, it keeps the vehicle centred in its lane at speeds between 0 and 185 kilometres per hour on highways and city streets.

Navigation-based Smart Cruise Control (NSCC).
Utilises the state-of-the-art navigation system to anticipate upcoming curves or straights on highways and automatically adjusts speed for safer driving. Also, if activated, the set speed also changes automatically whenever the posted speed limit changes.

Highway Driving Assist II (HDA 2).
Hyundai's cutting-edge autonomous driving technology enables your car to steer, accelerate and brake automatically. IONIQ 6 assesses the driving environment while you drive – and actively intervenes to keep you safe when a dangerous situation occurs or an accident is expected. It keeps you centred in your lane and traveling at a safe distance behind the car ahead. And if you like, it can also set the legal speed based on GPS and highway data. It can help you while changing lanes, during evasive driving within the lane, and with collision avoidance assist from near cut-in vehicle. And if a vehicle in the next lane is driving too close, it drives the vehicle close to the other lane edge for more safety.

Leading Vehicle Departure Alert (LVDA).
This clever feature for city driving alerts the driver when the vehicle in front departs from an idle state, like at a stoplight or in a traffic jam.



Blind Spot Collision-Avoidance Assist (BCA).
Delivering more safety in dense traffic, BCA will warn you and automatically apply the left or right brakes and control the steering when a vehicle is detected in your blind spot and you begin to change lanes.

Blind Spot View Monitor (BVM)*
BVM lets you see the rearward left and right-hand side views of IONIQ 6 in the digital cluster screen. The cameras are activated by the use of the turn indicator during lane changes.

Intelligent Speed Limit Assist (ISLA).
This semi-autonomous driving features recognises road speed signs and adjusts vehicle speed to match the speed limit (when activated).

*Only available on Ultimate and First Edition specifications.

Rear Cross-Traffic Collision-Avoidance Assist (RCCA).
Perfect for parking lots. When reversing out of areas with low visibility, the system not only warns the driver if vehicles approach from the side – it also applies the brakes automatically.

High Beam Assist (HBA).
Less stress and maximum visibility. Detects oncoming vehicles and vehicles in the same lane ahead and switches to low-beam as appropriate, reactivating the high-beam when no vehicles are detected.

Remote Smart Parking Assist 2 (RSPA 2)*
Tight parking spots made easy! At the touch of a button on the smart key, IONIQ 6 can remotely parallel park, diagonally park and perpendicularly park as well as back into and drive forward out of a parking spot by itself – with you standing outside of the car.

Surround View Monitor (SVM)*
Tight parking garage? Small car wash? No problem. The surround view monitor in the IONIQ 6 makes manoeuvring confined spaces easy and safer. Four cameras installed on the vehicle let you see a combined 360° view of your surroundings.

Exterior colours.

Choose from eleven exterior colours, including two options available with a matte finish. Depending on the colour chosen, the body cladding mouldings come in Medium Silver or semi-gloss Black Metallic.



Byte Blue Solid (No-cost option)



Serenity White Pearl*



Curated Silver Metallic*



Gravity Gold Matte*



Nocturne Grey Metallic*



Nocturne Grey Matte*



Transmission Blue Pearl*



Biophilic Blue Pearl*



Digital Green Pearl*



Abyss Black Pearl*



Ultimate Red Metallic*



20" alloy wheels

The aero-optimised 20" diamond cut alloy wheels have been designed exclusively for the IONIQ 6 to ensure the perfect combination of range and beauty. They echo the design theme, exuding an exclusive electric flair and harmonise beautifully with the sleek profile.

*Additional cost option

Interior colours.

Choose from two interior trim options: Black and Light Grey.



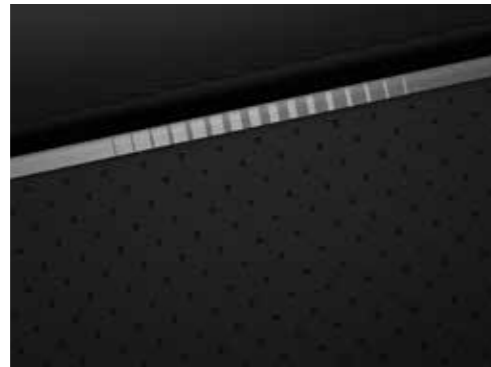
Black



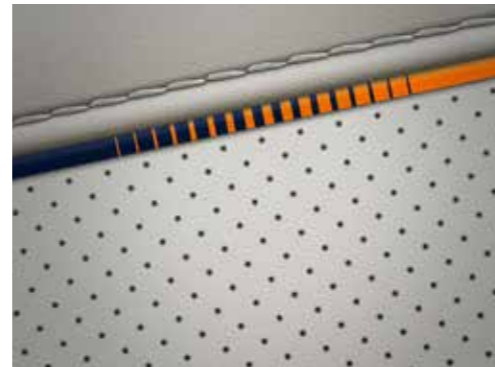
Light Grey



Recycled PET Yarn Cloth in Black (Premium trim only)



Full Eco Leather in Black with Grey Accents (Ultimate trim only)



Full Eco Leather in Light Grey with Blue/Orange Accents (Ultimate trim only)

Specifications and dimensions.

Type	77.4 kWh (RWD)	77.4 kWh (RWD)
Motor Type		
Permanent Magnet Synchronous Motor (PMSM)		
	2WD - Single Motor	AWD - Dual Motor
Max. Power (kW)	168	239
Max. Power (PS)	228	325
Max. Torque (Nm)	350	605
Max. Torque (lb-ft)	258	446
Battery		
Type	Lithium-Ion	
Capacity (kWh) 53.0 77.4	77.4	
Power Output (kW) 173 277	277	
Energy density (kWh/kg)	161.5	
Voltage (V) 480 697	697	
On Board Charger (OBC)		
Max Capacity (kW)	7 (single-phase) and 10.5 (three-phase)	
Performance (Single Speed Reduction Gear)		
	20" Wheel	20" Wheel
Max. Speed (mp/h)	115	115
Acceleration 0 - 62 mp/h	7.4	5.1
CO2 Emissions / Efficiency / Range		
CO2 combined (g/miles)	0	
Efficiency (kWh/62 miles)	16	16.9
Driving Range Combined*	338	322
Charge Time		
Standard **	11 kW OBC (10-100%)	7 h 10 mins
	50 kW (10-80%)	73 mins
Quick Charge **	350 kW (10-80%)	18 mins
Weight		
Curb Weight (kg)	1,910 - 1,986	2,020 - 2,096
Roof Rack Load (kg)	80	
Vertical Load (kg)	100	
Trailer Weight (kg)	w/ Brake	1,500
	w/ Brake	750



*Range according to WLTP combined cycle. Driving range may vary slightly depending on road conditions, your driving style and the temperature. It is also dependent on the type of tyres equipped. WLTP maximum electric range for IONIQ 6 Premium 77.4 kWh (RWD) - Actual range may vary.
 **Hyundai test data for comparison purposes. Actual time will vary and is dependent on a number of factors including battery temperature, condition and age, ambient temperature and the power provided by the charger. Charge time increases in cold weather and if battery temperature activates safeguarding technology.

Charge myHyundai.

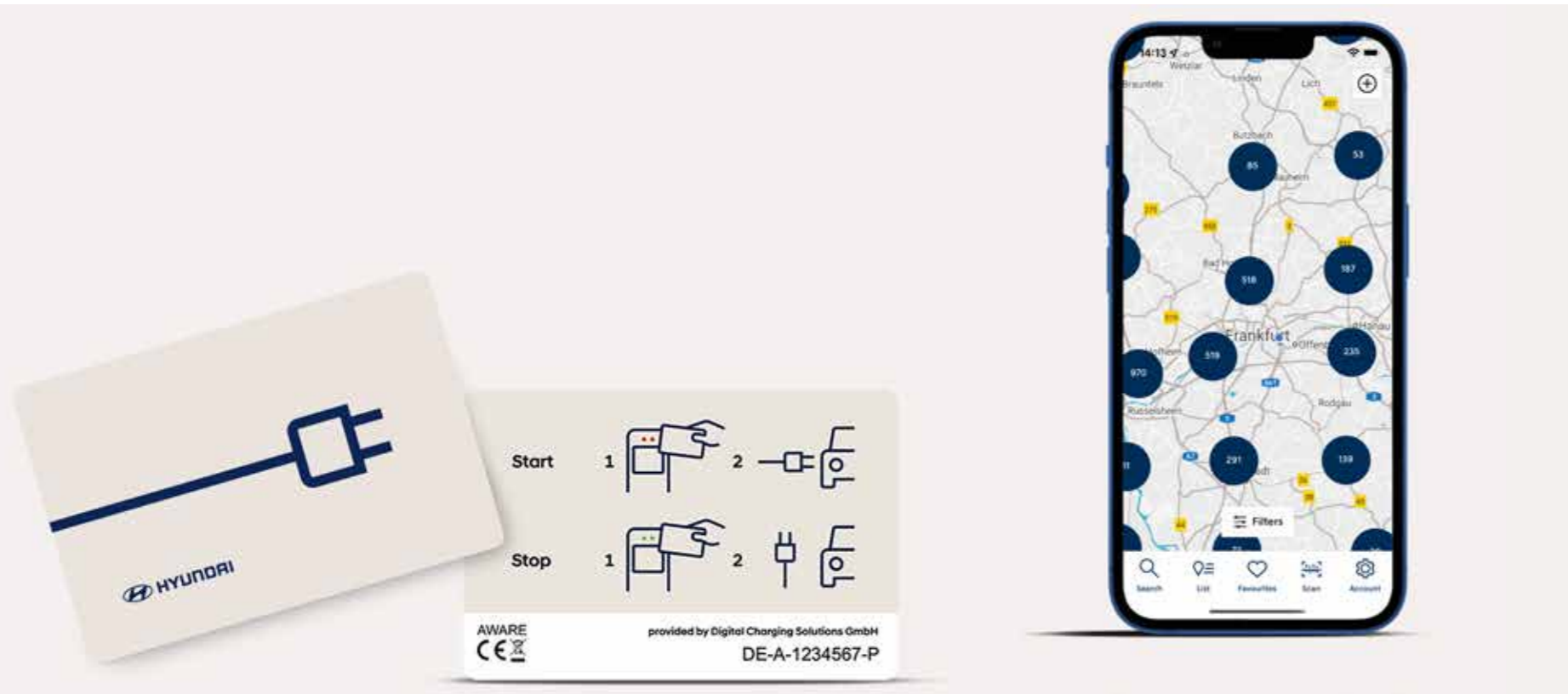
Charging your electric vehicle has never been easier or more accessible. Welcome to Charge myHyundai: a comprehensive and easy-to-use public charging solution that gives you access to over 440,000 charge points in 30 European countries. Enjoy easy cross-border charging with one single contract through e-roaming. 1 App. 1 Card. 1 Invoice. That means no hassles thanks to a streamlined one-payment solution.

Just plug and charge – no app or charging card needed. The authentication to initiate a charging session at a public charge point will take place directly between vehicle and charge point – saving you time and hassle. IONIQ 6 will be the first Hyundai vehicle with the practical Plug & Charge feature.*

Charge myHyundai is currently available in sixteen European markets: Austria, the Czech Republic, Denmark, Finland, France, Germany, Ireland, Italy, Netherlands, Norway, Poland, Slovakia, Spain, Sweden, Switzerland and the UK – with expansion to Latvia in late 2022.

For more information, visit the Charge myHyundai website in your country: www.chargemyhyundai.com.

* In order to use Plug & Charge, the function needs to be enabled in the Charge myHyundai account. Plug & Charge is a third-party service and can only be used at charge points that are Plug & Charge ready, e.g. IONITY and Aral Pulse. The service is expected to be ready and available for IONIQ 6 from Q2 2023. This term may be postponed depending on the technical readiness of the service provider.



IONITY.

IONIQ 6 owners can subscribe to the IONITY Premium Package via Charge myHyundai app – giving access to one of the largest high-power charging networks in Europe at a reduced rate. Charge on the high-power charging network for as low as 25p kWh.

IONIQ 6 First Edition owners can access a free one-year IONITY subscription by registering for Charge myHyundai with the VIN of your IONIQ 6 First Edition until Dec 31, 2023. This is only eligible to customers who activate their IONITY membership by Dec 31 2023.

For more information visit the Charge myHyundai website: chargemyhyundai.com/web/en/hyundai-gb



Awaken your world.

Breathtakingly beautiful and amazingly advanced, this all-electric saloon is a game changer. Equipped with an 800-volt battery system for ultra-fast charging and delivering a driving range of up to 338 miles – it has been created to take you further – with faster charging and sleeker style. A sophisticated streamliner, IONIQ 6's all-electric driving range has been maximised through extensive aerodynamic design and engineering work, delivering an ultra-low drag coefficient of 0.21 – one of the lowest of any production car in the world. Time to wake up to the beauty of electric mobility without range anxiety.





The Hyundai 5-Year Unlimited Mileage Warranty applies only to Hyundai vehicles that have been originally sold by an authorised Hyundai retailer to an end-customer, as set out in the terms and conditions of the warranty booklet. 8 years or 100,000 miles warranty on vehicle battery unit. Local terms and conditions apply. Contact your official Hyundai retailer for further information.

All the information contained in this brochure is provisional and subject to change without notice and is intended only as preliminary notification. Possible variations in the representation of vehicle colours are due to the limitations of printing technology. The products shown correspond to the offer and the range of equipment for European markets. The vehicles shown in this brochure may be equipped with additional equipment at extra cost, and not all model versions are included in this brochure. Hyundai Motor Europe reserves the right to make changes to technical specifications and equipment content without notice. Please consult your Hyundai retailer for exact details.

Car shown throughout brochure: IONIQ 6 Ultimate in Biophilic Blue Pearl with optional DSM mirrors.

Hyundai Motor UK Ltd,
Ground Floor, Birchwood Building,
The Office Park, Springfield Drive,
Leatherhead, KT22 7LP
T: 0800 981 981 www.hyundai.co.uk

02/2023